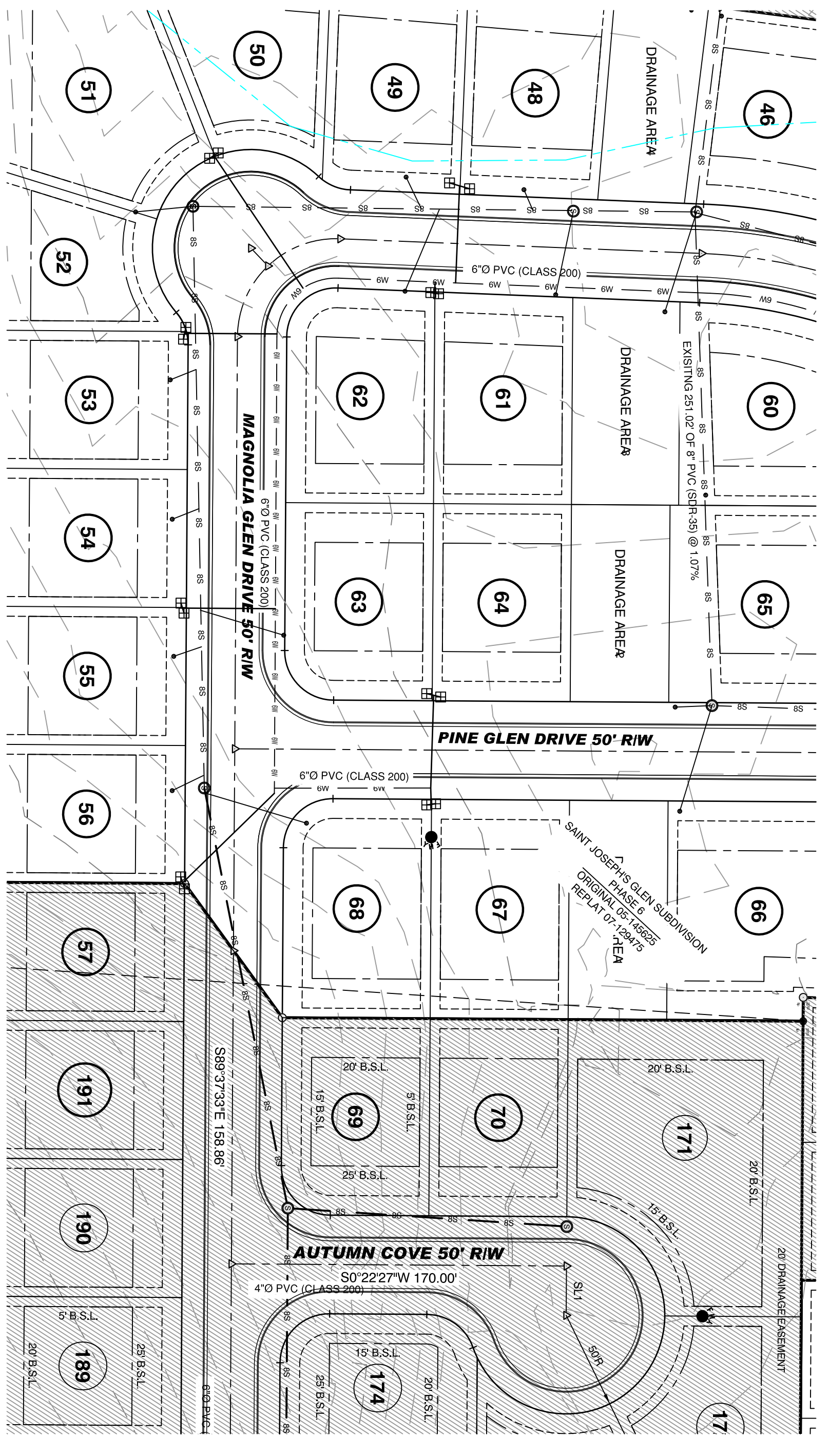


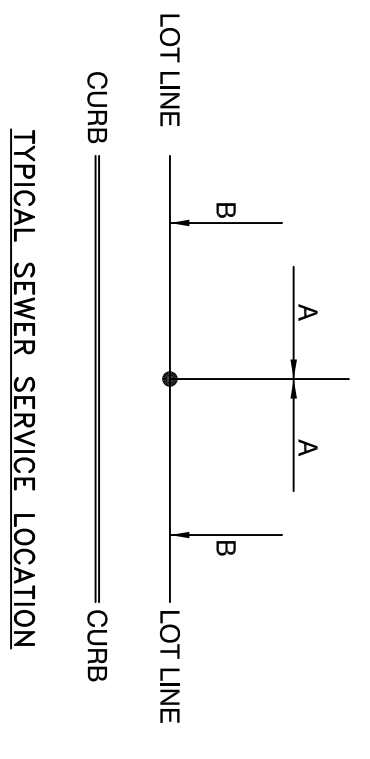
**PROFILE VIEW**  
**EXISTING SANITARY SEWER LINE G**  
 HORIZONTAL: 1"=50'  
 VERTICAL: 1"=5'



**PLAN VIEW**  
**EXISTING SANITARY SEWER LINE G**  
 1"=50'

LOT NO.	REF. COR.	A (FT.)	B (FT.)
46	SW	15.00	55.89
48	SE	32.39	3.66
49	NE	27.59	7.64
50	NE	.02	11.33
51	NW	24.56	8.94
52	NW	25.25	7.46
54	NW	24.81	6.26
55	NW	22.92	6.61
60	SE	13.66	97.22
61	NW	8.71	-1.08
62	NE	13.17	0.53
63	NE	32.17	0.53
64	SE	3.27	2.40
65	SE	5.93	5.19
67	SW	11.62	12.47

NOTE:  
 GAS LINE, CABLE LINE & TELEPHONE LINE TO BE ON OPPOSITE SIDE OF ROAD FROM WATER LINE.



**WATER LEGEND:**

- 2" BLOW OFF
- WATER MAIN
- GATE VALVE
- REDUCER
- FIRE HYDRANT
- DOUBLE WATER SERVICE
- SINGLE WATER SERVICE

**TYPICAL FIRE HYDRANT:**

- 2" BLOW OFF
- REDUCER
- GATE VALVE
- FIRE HYDRANT (2 TO 6 FEET FROM EDGE OF PAVEMENT)

NOTE: ALL FIRE HYDRANT LEADERS HAVE A GATE VALVE BETWEEN MAIN AND FIRE HYDRANT.

SEWER SERVICE

SEWER MAIN

SEWER MANHOLE

STATE OF ARKANSAS  
 REGISTERED PROFESSIONAL ENGINEER  
 WILLIAM W. REDD  
 No. 1975

FOR USE AND BENEFIT OF:  
**STEPHENS-BAKER CONSTRUCTION**

322 North Market Street  
 Benton, Arkansas  
 (501) 315-0786  
 Fax: (501) 315-0700  
 www.hopeengineers.com

**HOPE ENGINEERS**

SANITARY SEWER & WATER AS-BUILTS  
 ST. JOSEPH GLENN SUBDIVISION PHASE 6  
 A SUBDIVISION IN THE CITY OF ALEXANDER, SALINE COUNTY, ARKANSAS

DATE: OCTOBER 15, 2007  
 CHECKED BY: C.A.D. BY: A. FIELDS  
 SCALE: 1"=30'

DRAWING NUMBER: 07-0485  
 SHEET: 1 OF 2